



## medifa 6000

Mobile  
Operating Tables

Made in Germany

# Advantages at a glance

- Electro-hydraulic functions
- Optionally with or without electro-hydraulic leg rest adjustment
- Optionally with or without longitudinal sliding
- Additional manual back-up system independent from any power supply can be integrated
- Available with viscoelastic SF or PUR Upholstery
- All metal components made of high-quality stainless steel (1.4301)
- Optimal cleaning and disinfection conditions
- Simple manoeuvrability
- Smooth-running release mechanisms
- User-friendly control concept
- Suitable for various applications and patient positionings
- Suitable for x-ray and c-arm applications
- Wide range of accessories for all surgical disciplines
- Maximum permissible overall load of 454 kg

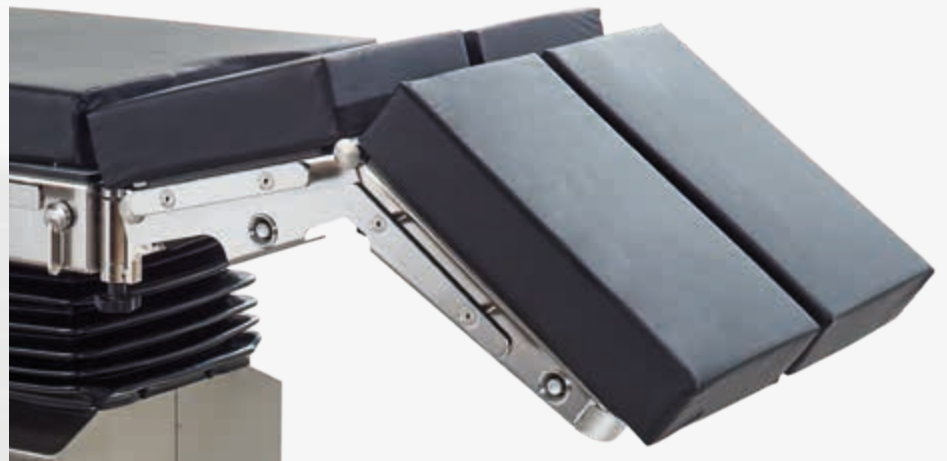


# Functionality and ergonomics



## Ergonomics

- Easy movement of operating table due to double swivel castors and fifth wheel
- Special base construction enables excellent foot access for the surgeon



## Quick and easy handling

- Smooth running of release mechanisms



## Manual back-up system

- Secures the functionality of operating table in case of electronic defect or breakdown of power supply
- Preselection of adjustments at column
- Adjustment via hydraulic foot pump
- Optional



## Stabilization cylinder

- Extendable cylinder at socket ensure optimal stability of operating table
- Optional

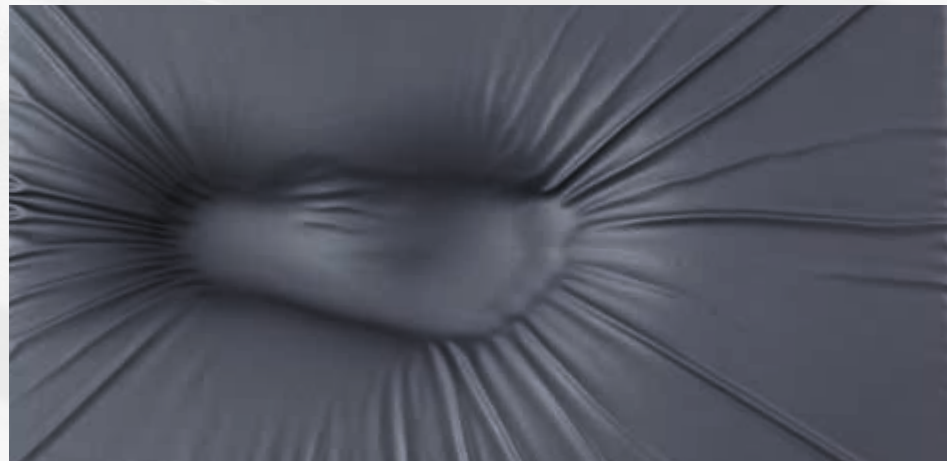


# Flexibility und comfort



## One fixing system for all upholstery parts

- Fixing and removing of upholstery parts by means of pin system
- Particularly hygienic and easy to clean (no Velcro fastenings)
- Easy switching between SF and PUR upholstery



## Comfort and hygiene

- Soft and hygienic upholstery prevents nosocomial infections and improves patient safety



## SF-Upholstery

- Very soft pressure-relieving viscoelastic foam
- Decubitus prophylaxis
- Height: 80 mm
- Detachable
- Electrically conductive
- Radiolucent



## PUR-Upholstery

- Ergonomically formed
- Height: 60 mm
- Detachable
- Electrically conductive
- Radiolucent

# Control concept



Colour display with battery indicator

Navigation and acknowledgement keys

Reverse-Mode

Central brake

Positioning keys

Activation of hand switch

Stop-Key (except model 601920)

Automatic levelling

1. Standard: Backlit hand switch with integrated colour display and battery indicator (optional: wireless infrared remote control, art.-no. 604070, not retrofittable)
2. Standard: Additional control unit at column
3. Optional: Foot switch for height, lateral and Trendelenburg adjustment (art.-no. 604060)
4. Optional: Manual back-up system operated by foot pedal releases (art.-no. 50655, not retrofittable)





# Models medifa 6000



## Electro-hydraulic operating table

### Art.-no. 601700

- Height adjustment from 690 to 1,050 mm
- Trendelenburg adjustment from -30° up to +30°
- Lateral tilt up to 20°
- Lower back rest adjustment from -40° up to +70°
- Upper back rest adjustment from -35° up to +50°
- Flex / Reflex position
- Automatic levelling
- Selection of patient orientation (reverse mode)
- Lateral guide rails for attachment of accessories, stainless steel, 25 x 10 mm
- Continuous X-ray tunnel from head end to foot end
- Mobility via 4 double swivel castors ø 125 mm with central brake, electrically conductive and fifth castor
- Viscoelastic SF (H = 80 mm) or PUR upholstery (H = 60 mm), electrically conductive, detachable, radiolucent
- Maximum permissible overall load: 454 kg (1,000 lbs)



## Further models:

### Art.-no. 601820

Additionally with longitudinal sliding up to 300 mm

### Art.-no. 601120

With back rest in one part (not divided), additionally with longitudinal sliding up to 300 mm



- Model 601120 can be equipped with an optional manual kidney bridge
- All models of medifa 6000 can be equipped with a wide range of further accessories

## Configuration example

### Art.-no. 601700

Electro-hydraulic operating table

### Art.-no. 61144SF

Head rest

### Art.-no. 61250SF

Upper back rest

### Art.-no. 61615SF

Divided leg rest

### Art.-no. 61217

Arm rest

Price on request!

## Specialities

- General surgery
- Orthopaedics
- Gynaecology
- Urology
- ENT

# Models medifa 6000



## Electro-hydraulic operating table

### Art.-no. 601920

- Height adjustment from 690 to 1,050 mm
- Trendelenburg adjustment from -30° up to +30°
- Electro-hydraulic leg rest adjustment from -90° up to +75° (single and parallel)
- Longitudinal sliding up to 300 mm
- Lateral tilt up to 20°
- Lower back rest adjustment from -40° up to +70°
- Flex / Reflex position
- Automatic levelling
- Selection of patient orientation (reverse mode)
- Lateral guide rails for attachment of accessories, stainless steel, 25 x 10 mm
- Continuous X-ray tunnel from head end to foot end
- Mobility via 4 double swivel castors ø 125 mm with central brake, electrically conductive and fifth castor
- Viscoelastic SF upholstery (H = 80 mm), electrically conductive, detachable, radiolucent
- Maximum permissible overall load: 454 kg (1,000 lbs)



## Electro-hydraulic leg rest adjustment

The operating table 601920 extends the 6000 series by a version with electro-hydraulic leg rest adjustment from -90° to +75°.

Movement of divided leg rest can be carried out individually or both at same time.



## More ergonomic handling and advantages especially in the following surgeries:

- Shoulder surgery in reverse mode with electro-hydraulic adjustment of shoulder rest (more freedom, better C-arm access)
- Orthopaedic surgeries
- Gynaecological and urological surgeries (electro-hydraulic adjustment of leg rests)
- Knee arthroscopy

## Configuration example

### Art.-no. 601920

Electro-hydraulic operating table

### Art.-no. 61144SF

Head rest

### Art.-no. 61255SF

Upper back rest

### Art.-no. 61616SF

Divided leg rest

### Art.-no. 61217

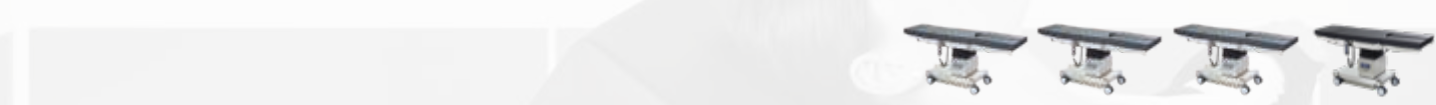
Arm rest

**Price on request!**

## Specialities

- General surgery
- Orthopaedics
- Shoulder surgery
- Knee arthroscopy
- Gynaecology
- Urology
- ENT

# Models at a glance



	Adjusting range	601120	601700	601820	601920
Height adjustment	690 - 1,050 mm	●	●	●	●
Trendelenburg	-30° / +30°	●	●	●	●
Lateral tilt	-20° / +20°	●	●	●	●
Back rest adjustment (lower back rest)	-40° / +70°	●	●	●	●
Back rest adjustment (upper back rest)	-35° / +50°		●	●	
Leg rest adjustment (single and parallel)		■	■	■	●
Flexion		●	●	●	●
Longitudinal sliding	300 mm	●		●	●
Fifth castor		●	■	■	■
Automatic leveling		●	●	●	●
Central brake		●	●	●	●
Kidney bridge		◆■	●	●	
Manual back-up system		◆	◆	◆	◆
Stability cylinders at base		◆	◆	◆	◆
Maximum permissible overall load		454 kg	454 kg	454 kg	454 kg

● Electro-hydraulic    ■ Manual    ◆ Optional

# Positioning examples



General surgery in  
supine position



Thoracic surgery in  
lateral position



Bariatric surgery in  
standing position



Gynaecology, urology and proctology in  
lithotomy position



# Positioning examples



Proctology and spine surgery in  
knee-elbow position



Spine surgery in  
prone position



Neuro surgery in  
beach chair position



Knee arthroscopy in  
supine position



ENT surgery in  
supine position



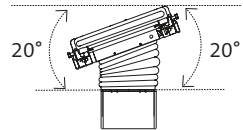
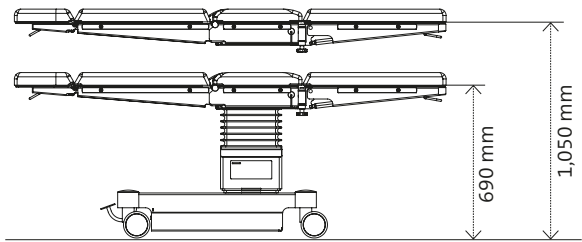
Neuro surgery in  
supine position



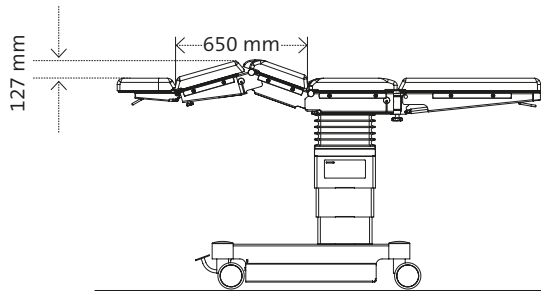
Orthopaedics in supine position  
with extension device



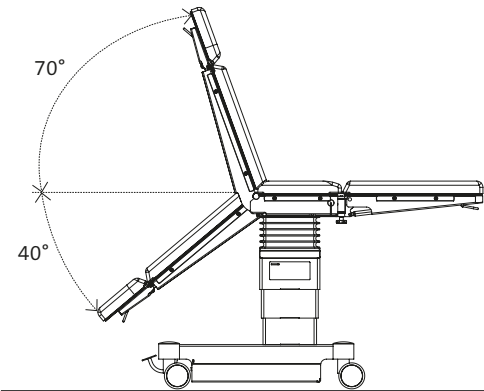
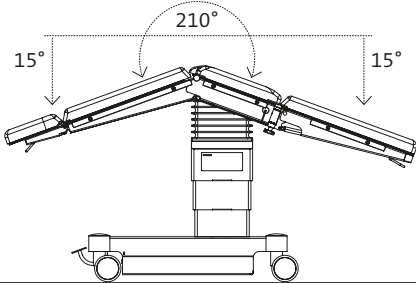
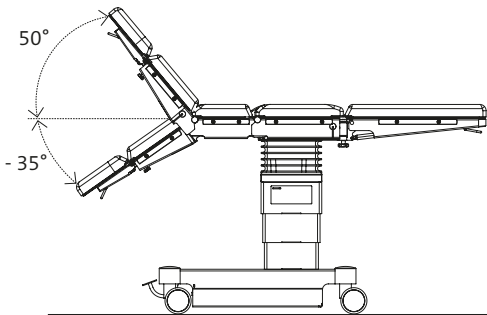
Orthopaedics in supine position  
with extension device



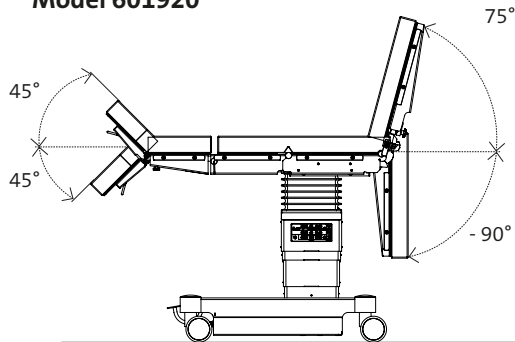
Models 601700 / 601820



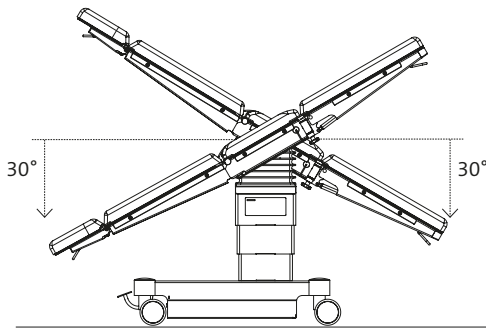
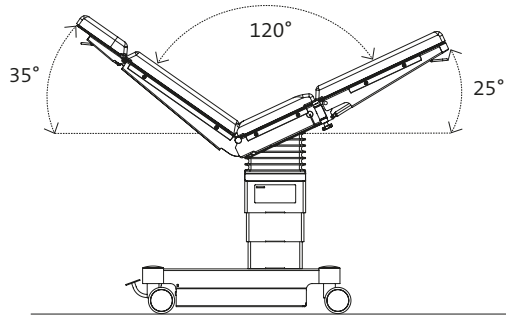
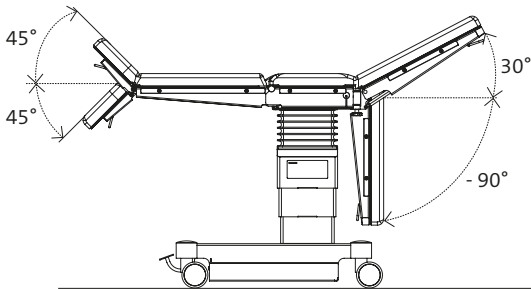
Models 601700 / 601820



Model 601920

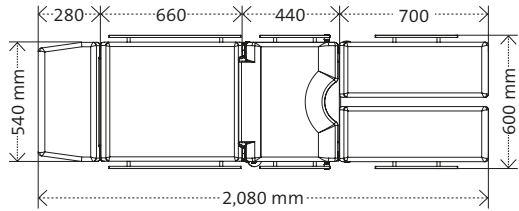


Models 601120, 601700 and 601820

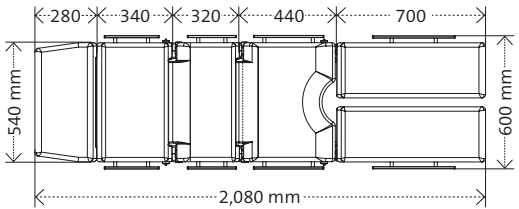


# Technical information

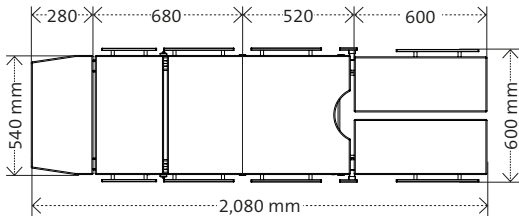
Ground plan 601120



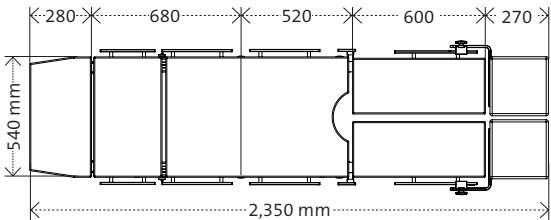
Ground plan 601700 / 601820



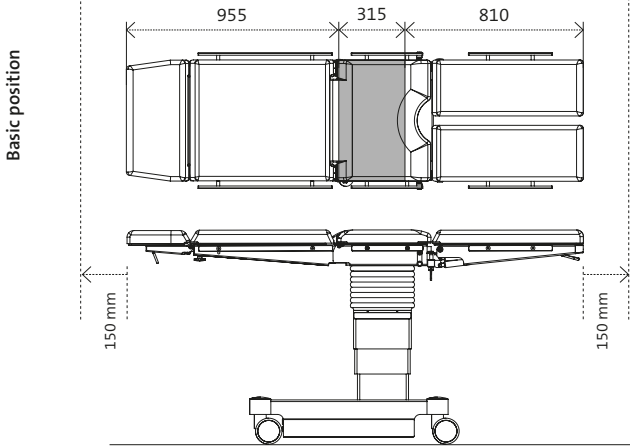
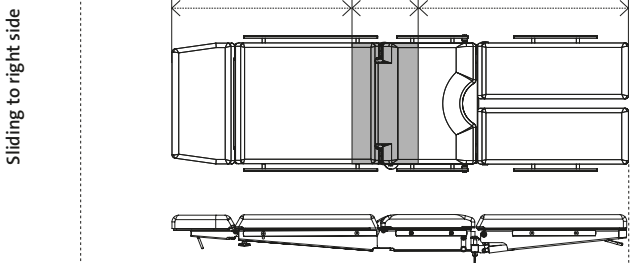
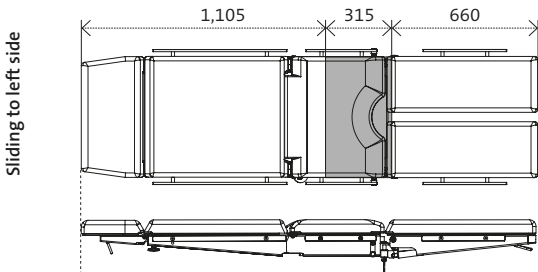
Ground plan 601920



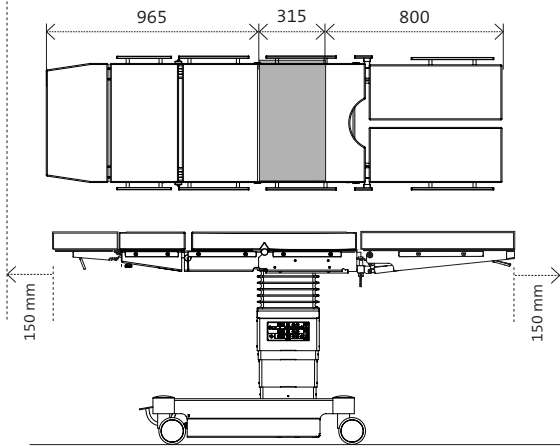
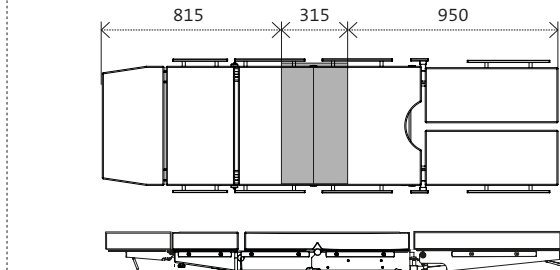
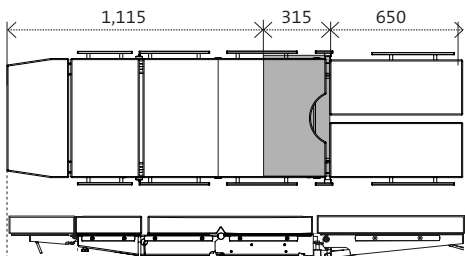
Ground plan 601920 with extension 61631



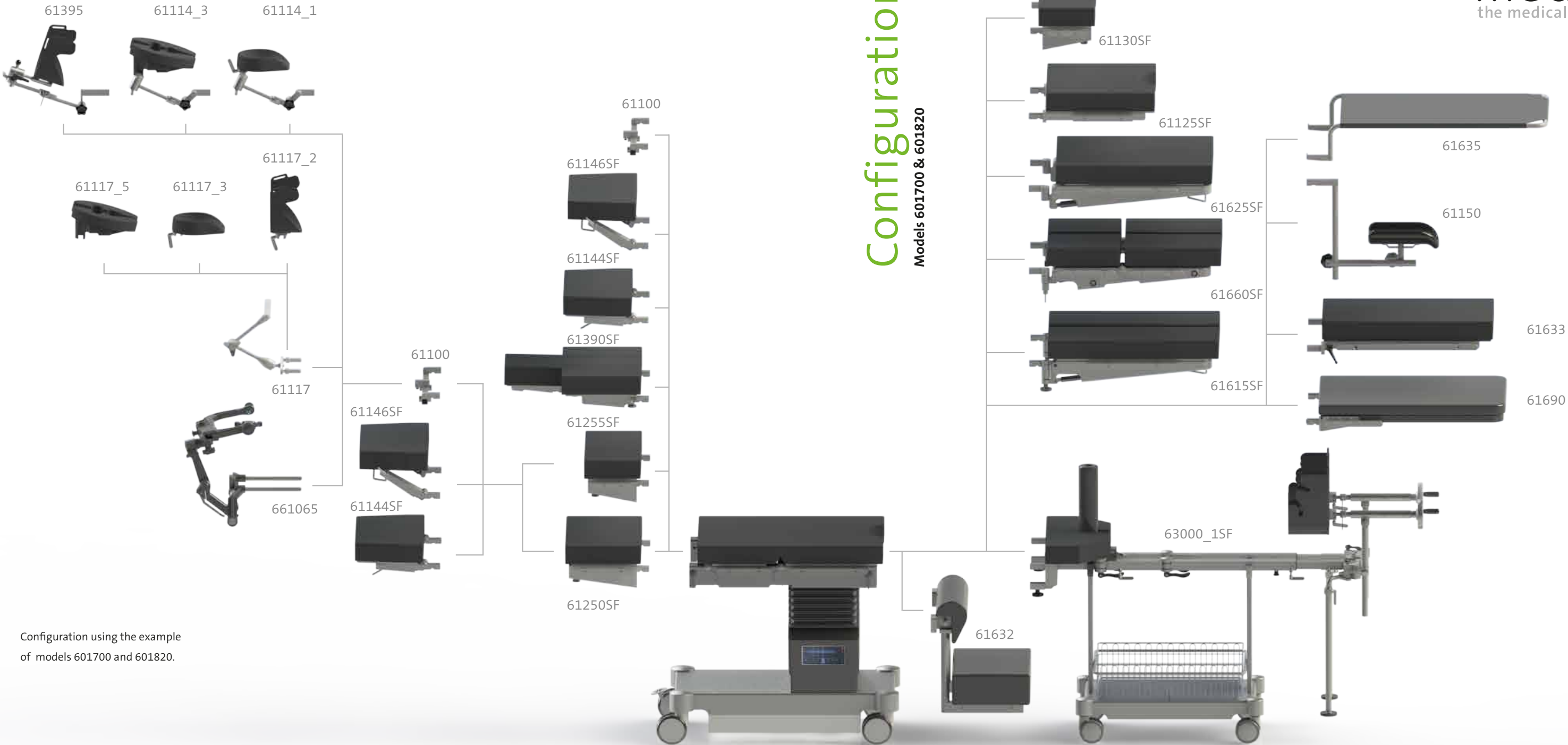
Longitudinal sliding of table top  
(model 601120 / 601820)



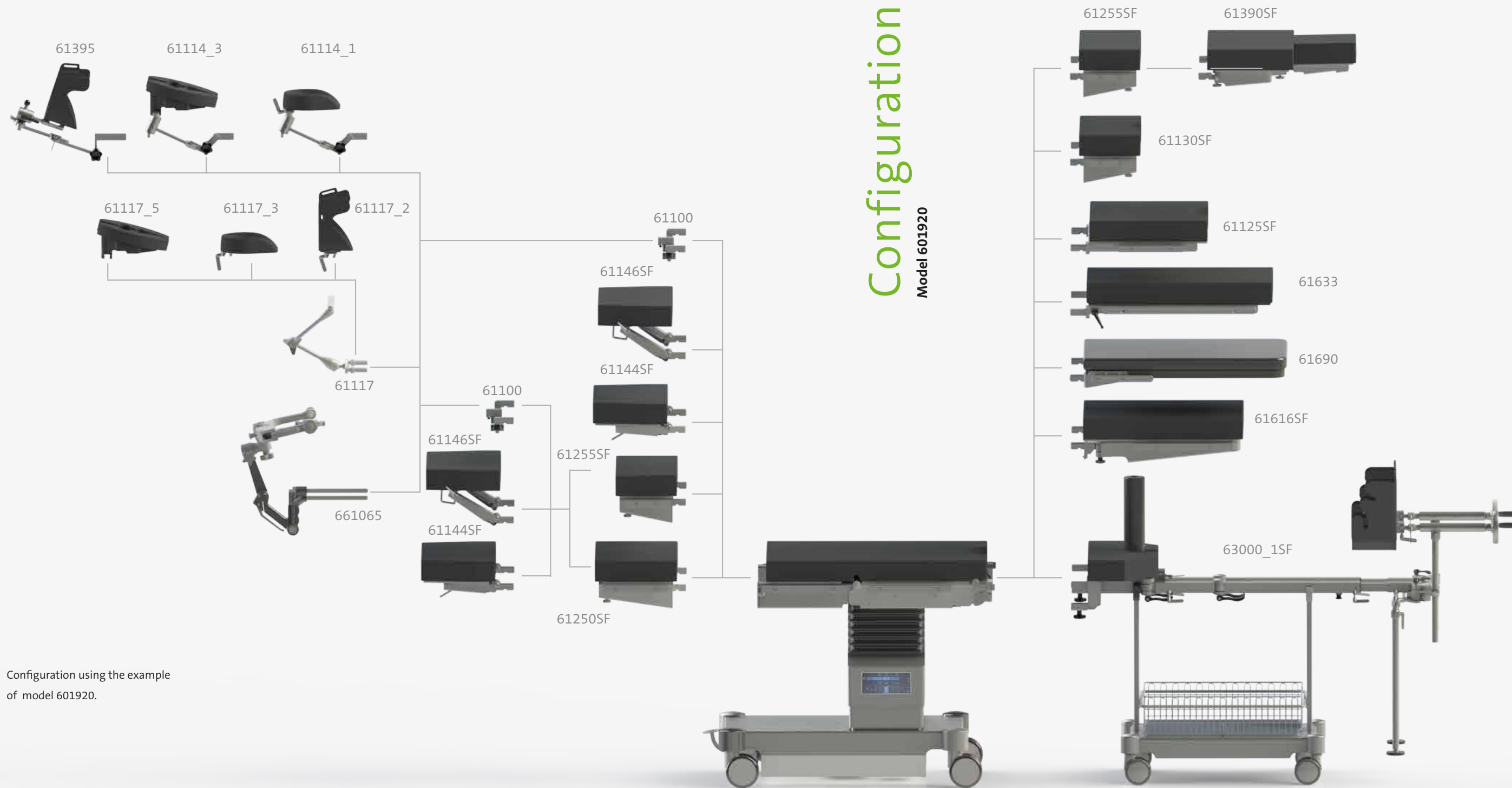
Longitudinal sliding of table top  
(model 601920)







Configuration using the example  
of models 601700 and 601820.



# Configuration

Model 601920

Configuration using the example of model 601920.

# Accessories for medifa 6000



## Foot switch for medifa 5000 and 6000

**Art.-no. 604060**

- Additional control unit to adjust the main functions height, lateral and Trendelenburg movement
- Tethered
- Cannot be retrofitted!



## Infrared remote control for medifa 5000 and 6000

**Art.-no. 604070**

- Wireless data transfer
- Control panel for all electric functions of operating table
- Incl. charging station
- Cannot be retrofitted!



## Stabilization cylinder for medifa 6000

**Art.-no. 50650**

- Extendible
- For optimal stability of operating table
- Cannot be retrofitted!



## Manual back-up system for medifa 6000

**Art.-no. 50655**

- Secures the functionality of operating table in case of an electronic defect or breakdown of power supply
- Override of electronic functions by means of manual foot pedal
- Cannot be retrofitted!



## Connecting bar for medifa 5000 and 6000

**Art.-no. 61670**

- Exchange of stainless steel connecting bar at back rest with a radiolucent connecting bar made of special plastic
- Improves radiolucency of back rest



## Kidney bridge for medifa 5000 and model 601120

**Art.-no. 61655SF**

- Manually adjustable by hand crank
- Upholstery: Viscoelastic SF upholstery, H = 80 mm, radiolucent, electrically conductive, detachable
- Also available with PUR upholstery, H = 60 mm (Art.-no. 61655)
- Cannot be retrofitted!



# Accessories for medifa 6000



## Head rest large for medifa 5000 and 6000

### Art.-no. 61144SF

- Easy adjustment by means of gas spring from -45° to +45°
- Docking and undocking at back rest
- L x W: 285 x 495 mm
- Upholstery: Viscoelastic SF upholstery, H = 80 mm, radiolucent, electrically conductive, detachable
- Also available with PUR upholstery, H = 60 mm (Art.-no. 61144)



## Head rest large with double joint for medifa 5000 and 6000

### Art.-no. 61146SF

- Easy adjustment by means of gas spring from -45° to +45°
- Double joint enables additional tilting
- Docking and undocking at back rest
- L x W: 285 x 495 mm
- Upholstery: Viscoelastic SF upholstery, H = 80 mm, radiolucent, electrically conductive, detachable
- Also available with PUR upholstery, H = 60 mm (Art.-no. 61146)



## Upper back rest for models 601700, 601820 and 601920 (L= 360 mm)

### Art.-no. 61250SF

- Docking and undocking at lower back rest
- Integrated side rails (EU)
- L x W: 360 x 540 mm
- Upholstery: Viscoelastic SF upholstery, H = 80 mm, radiolucent, electrically conductive, detachable
- Also available with PUR upholstery, H = 60 mm (Art.-no. 61250)



## Upper back rest for models 601700, 601820 and 601920 (L= 250 mm)

### Art.-no. 61255SF

- Docking and undocking at lower back rest
- Integrated side rails (EU)
- L x W: 250 x 540 mm
- Upholstery: Viscoelastic SF upholstery, H = 80 mm, radiolucent, electrically conductive, detachable



## Tripartite back rest for medifa 5000 and model 601120

### Art.-no. 61385SF

- Incl. head rest
- Easy access to shoulder area by means of three detachable segments
- Docking and undocking at pelvis section (Reverse-Mode)
- Easy adjustment by means of gas spring
- L x W: each segment 315 x 170 mm
- Upholstery: Viscoelastic SF upholstery, H = 80 mm, radiolucent, electrically conductive, detachable
- Also available with PUR upholstery, H = 60 mm (Art.-no. 61385)

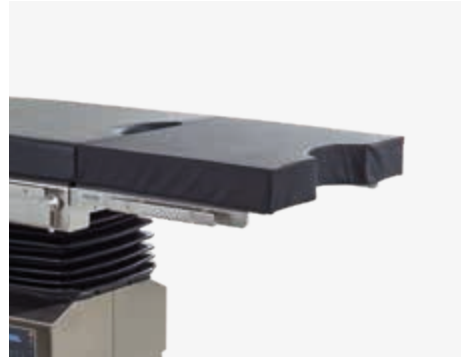


## Tripartite back rest for models 601700, 601820 and 601920

### Art.-no. 61390SF

- Incl. head rest
- Easy access to shoulder area by means of three detachable segments
- Docking and undocking at lower back rest
- L x W: each segment 315 x 170 mm
- Upholstery: Viscoelastic SF upholstery, H = 80 mm, radiolucent, electrically conductive, detachable
- Also available with PUR upholstery, H = 60 mm (Art.-no. 61390)

# Accessories for medifa 6000



## **Pelvis section extension for medifa 5000 and 6000 (L= 430 mm)**

### **Art.-no. 61125SF**

- Extension of pelvis section by 430 mm
- With cut-out
- Integrated side rails (EU)
- L x W: 430 x 540 mm
- Upholstery: Viscoelastic SF upholstery, H = 80 mm, radiolucent, electrically conductive, detachable
- Also available with PUR upholstery, H = 60 mm (Art.-no. 61125)



## **Pelvis section extension for medifa 5000 and 6000 (L= 250 mm)**

### **Art.-no. 61130SF**

- Extension of pelvis section by 250 mm
- With cut-out
- Integrated side rails (EU)
- L x W: 250 x 540 mm
- Upholstery: Viscoelastic SF upholstery, H = 80 mm, radiolucent, electrically conductive, detachable



## **Leg rest for medifa 5000 and models 601120, 601700, 601820**

### **Art.-no. 61625SF**

- Adjustment by means of gas spring from -90° up to +30°
- Docking and undocking at pelvis section
- Integrated side rails (EU)
- L x W: 670 x 540 mm
- Upholstery: Viscoelastic SF upholstery, H = 80 mm, radiolucent, electrically conductive, detachable
- Also available with PUR upholstery, H = 60 mm (Art.-no. 61625)



## **Divided leg rest for medifa 5000 and models 601120, 601700, 601820 (pair)**

### **Art.-no. 61615SF**

- Adjustment by means of gas spring from -90° up to +30°, swivelling up to 180°
- Docking and undocking at pelvis section
- Integrated side rails (EU)
- L x W: each 730 x 250 mm
- Upholstery: Viscoelastic SF upholstery, H = 80 mm, radiolucent, electrically conductive, detachable
- Also available with PUR upholstery, H = 60 mm (Art.-no. 61615)



## **Divided leg rest for model 601920 (pair)**

### **Art.-no. 61616SF**

- Electro-hydraulic adjustment from -90° up to +75°, swivelling up to 180°
- Docking and undocking at pelvis section
- Integrated side rails (EU)
- L x W: each 610 x 250 mm
- Upholstery: Viscoelastic SF upholstery, H = 80 mm, radiolucent, electrically conductive, detachable



## **Double divided leg rest for medifa 5000 and models 601120, 601700, 601820 (pair)**

### **Art.-no. 61660SF**

- Adjustment by means of gas spring from +30° up to -90°, swivelling up to 180°, bendable, Integrated side rails (EU)
- Docking and undocking at pelvis section
- L x W: each 720 x 250 mm
- Upholstery: Viscoelastic SF upholstery, H = 80 mm, radiolucent, electrically conductive, detachable
- Also available with PUR upholstery, H = 60 mm (Art.-no. 61660)

# Accessories for medifa 6000



**Carbon positioning rest for medifa 5000 and 6000**  
**Art.-no. 61690**

- Incl. upholstery
- For intraoperative x-ray, optimal radiolucency (360°)
- Docking and undocking at pelvis section or lower back rest
- L x W: 750 x 540 mm
- Upholstery: SF, H = 45 mm, radiolucent, electrically conductive



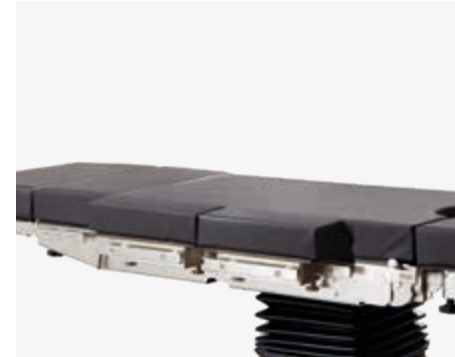
**Transfer leg rest for medifa 5000 and 6000**  
**Art.-no. 61635**

- For short-time positioning of legs
- Docking and undocking at pelvis section
- L x W: 900 x 500 mm



**Paediatric surgery rest for medifa 5000 and 6000**  
**Art.-no. 61633**

- Docking and undocking at pelvis section
- Integrated side rails (EU)
- L x W: 700 x 430 mm
- Upholstery: Viscoelastic foam, H = 60 mm, electrically conductive



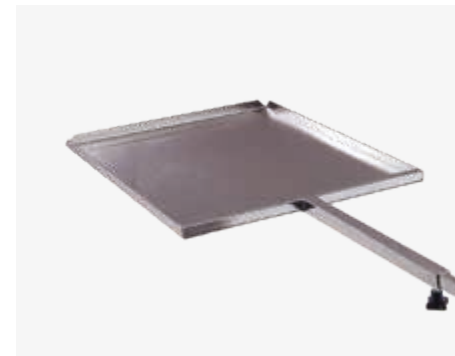
**Extension segments medifa 5000, 6000 and 7000 (pair)**  
**Art.-no. 61355SF**

- Segments for extension of operating table's lying surface
- Integrated side rails (EU)
- L x W: each segment 310 x 110 mm
- Upholstery: Viscoelastic SF upholstery, H = 70 mm, radiolucent, electrically conductive, detachable
- Also available with PUR upholstery, H = 60 mm (Art.-no. 61355)



**Rinsing set for medifa 5000 and 6000**  
**Art.-no. 61120**

- Incl. bucket, basin, strainer, tube, undercarriage and fixation
- Docking and undocking at pelvis section
- L x W x H (Basin): 325 x 265 x 65 mm
- Volume (Bucket): 15 litre
- Material: Stainless steel



**Radiographic cassette carrier for medifa 5000 and 6000**  
**Art.-no. 61640**

- To insert radiographic cassettes under table top of operating table
- With telescopic rod
- L x W x H: 470 x 385 x 16 mm
- Suitable for radiographic cassettes with dimensions 14" x 17" (US)
- Material: Stainless steel



# Additional accessories

A wide range of optional accessories complements the application spectrum of our operating tables.

For central storage of accessories we offer a trolley (art.-no. 341045) made of polished stainless steel.

Further accessories can be found in our brochure "Accessories for operating tables".



# medifa

## Competence around operating rooms

medifa, as a leading international manufacturer of medical devices, offers innovative solutions and products for operating rooms, mobile hybrid surgical systems and other areas in hospitals or ambulatory surgical centers.

The vast product portfolio includes mobile operating tables and surgical accessories, mobile carbon operating tables, operating lights (medifa H!Light) as well as examination and treatment chairs for gynecology, urology and proctology.

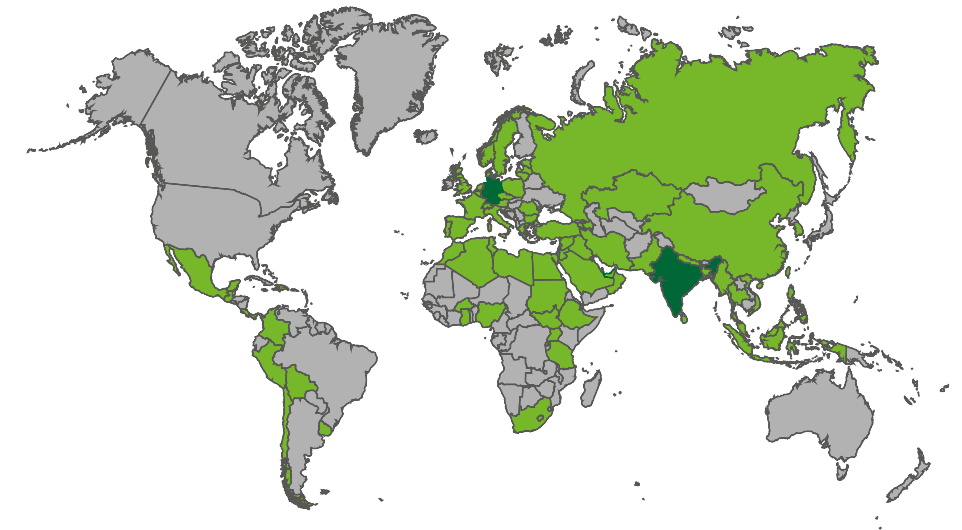
Development, design and production take place in Germany. With a large share of value added in the group of companies, medifa guarantees its customers fast response times and high quality „Made in Germany“ in accordance with certified national and international quality standards.

medifa is consistently oriented towards the requirements of its customers. In line with the slogan “we care”, customers from all over the world can rely on top-class consultation, processing and quality from a single source.

## Products

- Operating lights (medifa H!Light)
- Mobile operating tables
- Mobile carbon operating tables for minimal invasive applications
- Accessories for operating tables and lights
- Examination and treatment chairs (gynecology, urology and proctology)
- Medical functional furniture

## medifa worldwide





**medifa GmbH**

Industriestraße 5  
57413 Finnentrop  
Germany  
fon +49 2721 71 77 -0  
fax +49 2721 71 77 -255  
info@medifa.com

we care. Code



Version 01-23-EN

Subject to modifications due to technical development.

This document is intended to provide information to an international audience outside of the US.



Made in Germany